

CADIA  
TRAIL  
PARK



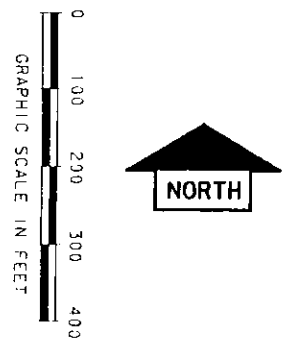
**Carter Burgess**  
CARTER & BURGESS, INC.  
3880 HULLEN STREET  
FORT WORTH, TX 76107-7254

NORTH BEACH STREET

HILLWOOD DEVELOPMENT CORPORATION  
5400 LBJ FREEWAY  
ONE LINCOLN CENTER, SUITE 1025  
DALLAS, TEXAS 75240

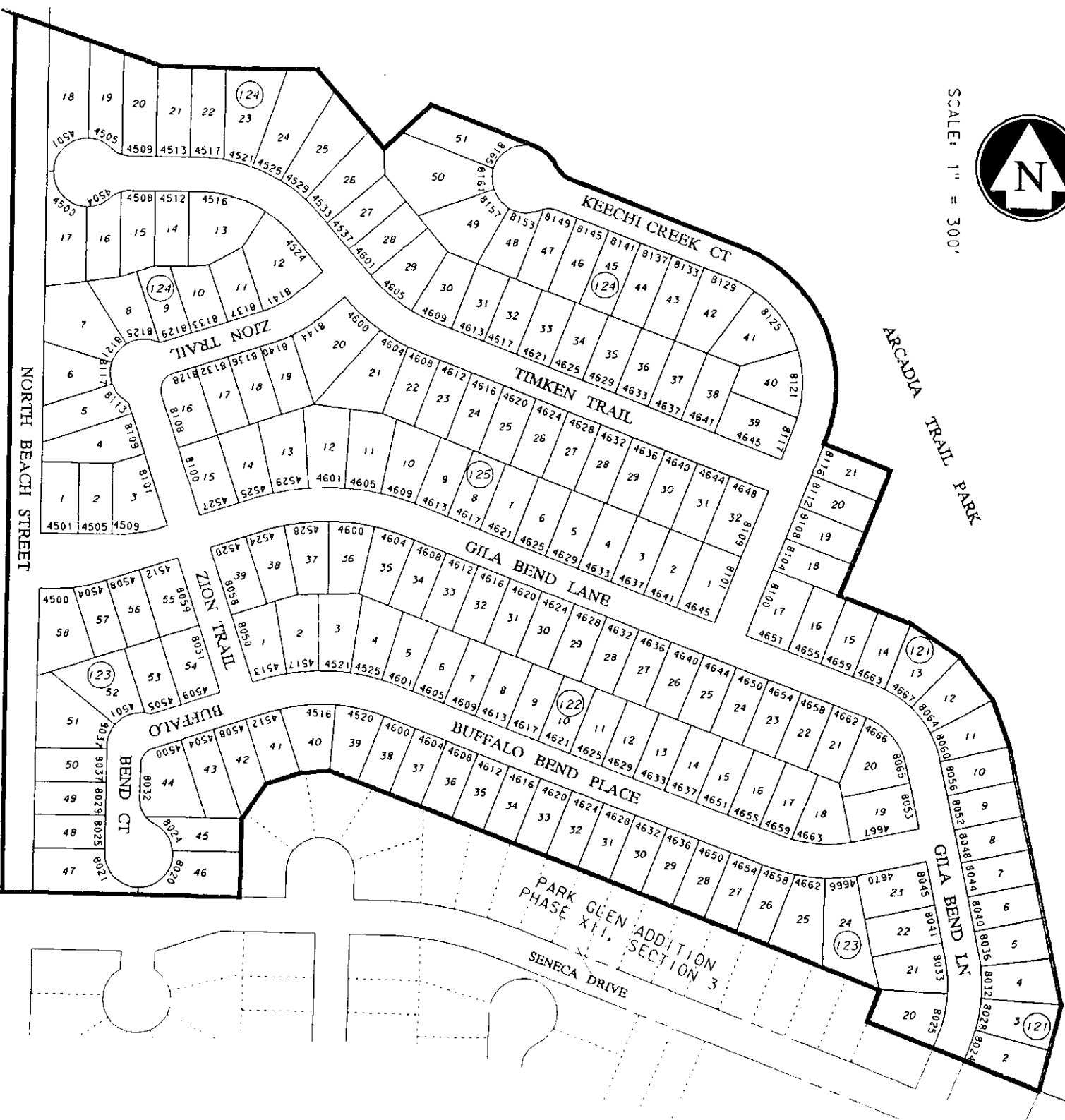
THE VILLAGES OF  
**Park Glen**  
A Masterplanned Community

PHASE XII  
SECTION 1





SCALE: 1" = 300'



SHEFFIELD  
 DEVELOPMENT CORPORATION  
 3441 OLD DENNIS ROAD  
 WEATHERFORD, TEXAS 76087  
 METRO 813-1309

THE VILLAGES OF  
**Park Glen**  
 PHASE XII  
 SECTION 4

 **Carter & Burgess**  
 Consultants in Planning, Engineering, Architecture,  
 Construction Management and Related Services  
 CARTER & BURGESS, INC.  
 3880 HULSH STREET  
 FORT WORTH, TX 76107 - 7254